

SATANISM AND WITCHCRAFT SYMBOLS

Part 2

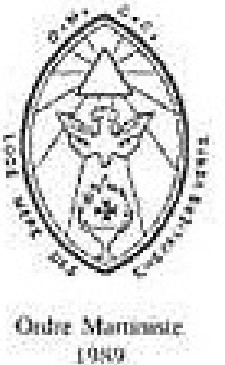
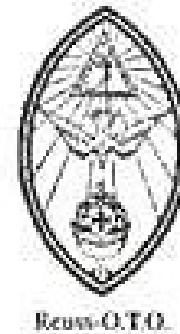
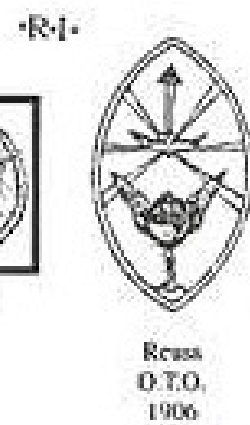
THE DOVE

- The Holy Ghost *did* come in the form of a dove to Jesus, but we are not to elevate the dove above other creatures, or put it on churches
- The dove is not the Holy Spirit. The Holy Spirit came in the *form* of a dove, but He is not a dove.

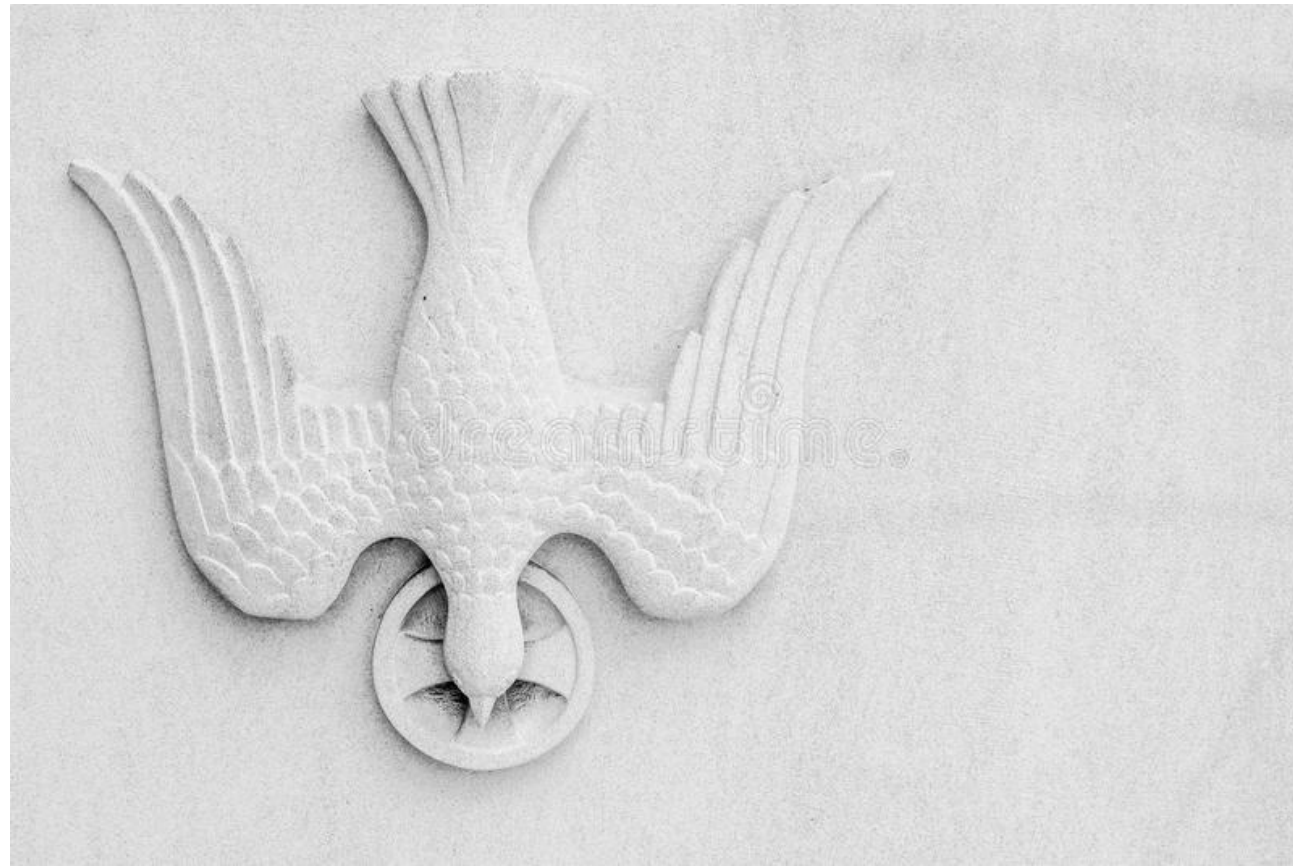
THE POPE's HAT



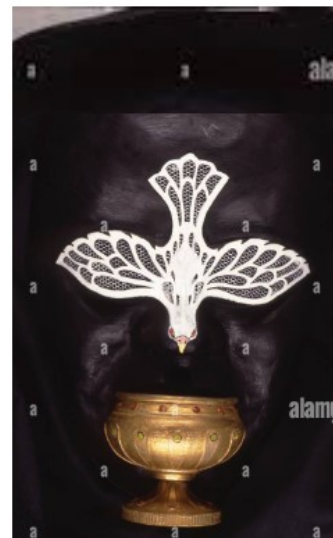
Turning the Holy Spirit upside down



DOES THE DOVE FLY UPSIDE-DOWN ?



A DYING DOVE



Ecumenical mega-church

UNHOLY ALLIANCE

Founded by traditional healer

\$ 65 Million Private jet
\$50,000 per month to fly
“A new car every month”



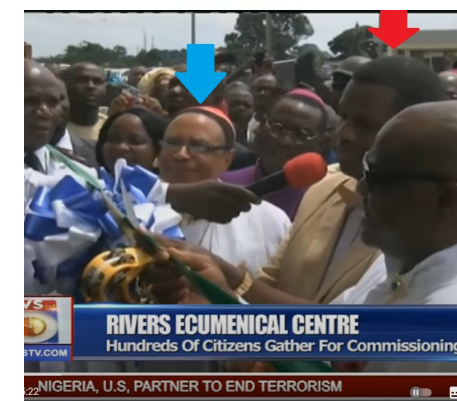
NASDAQ PUBLIC STOCK

By 1995 the firm was publicly traded on Nasdaq symbol ITGR
“Praise Worship” registered trademark



Licensing / copyright selling the Holy Spirit Acts 8:20

W WHITAKER HOUSE



Rivers Ecumenical Centre: Pastor Adeboye Calls For Renewal Of Faith

Adeboye calls for renewal of faith
 (“renewal” is a Catholic Jesuit term)

Pastor Adeboye reveals wooden staff he uses for miracles (MAGIC WAND)



**CITY OF DAVID
TREASURE HOUSE
WEALTHY PLACE
LOVE PAVILION
THE FAMILY OF LOVE
THE KING'S PALACE
MEN OF VALOUR
MESSIAH'S PLACE**

General Overseer of Redeemed Christian Church of God, (RCCG) Enoch Adeboye, has revealed a short wooden staff that was blessed and handed over to him for miracles by founder of the church, the late Rev Joseph Akindayomi.

Adeboye showed the short wooden staff to RCCG congregants during the 65th annual convention of the church at the Redemption Camp, Lagos-Ibadan Expressway, Ogun State.

He said that God had instructed the late Rev. Akindayomi to make the short wooden staff to be blessed and to be handed over to him (Adeboye) for prayers and miracles.

Adeboye explained that the staff had been given to him years ago but God ordered that it should be used sparingly.

He used it at the Convention for three special prayers, including a prayer for God to make a way where there is no way. The cleric raised it up, mentioned a prayer point and the congregation prayed.

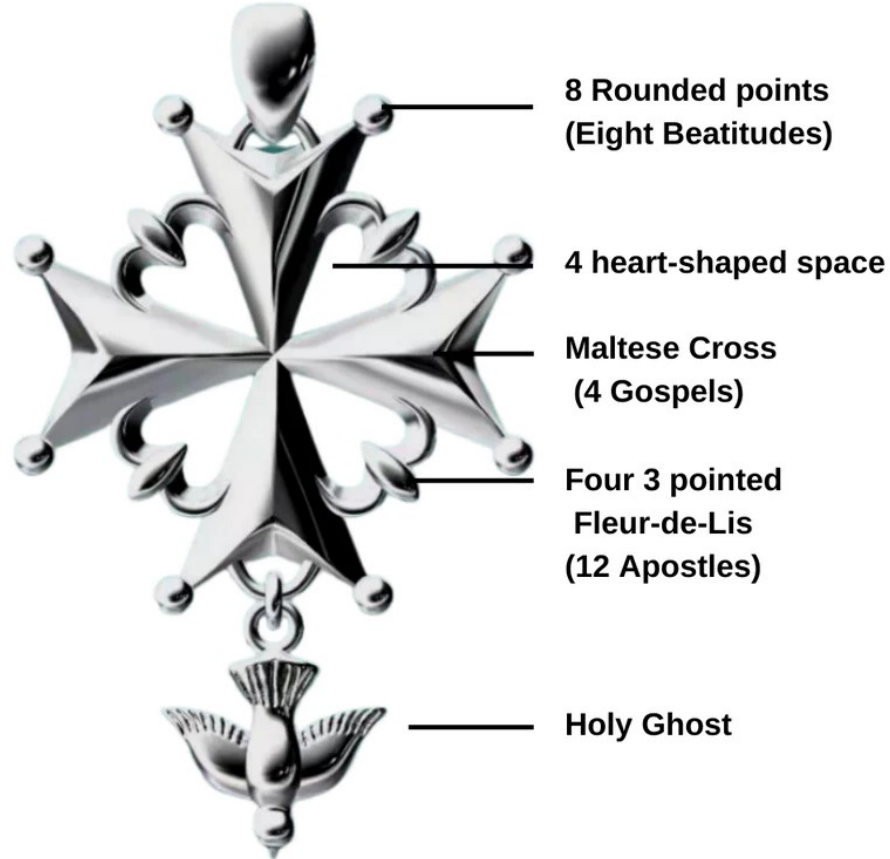
The prayers done, he raised it up again to bless handkerchiefs which the congregation waved with shouts of “Halleluyah, halleluyah!”

UPSIDE-DOWN DOVE IS NOT THE HOLY GHOST – It's a devil's flower



DREAM CATCHER

HUGUENOT CROSS



Powerful occult symbol disguised as a bird



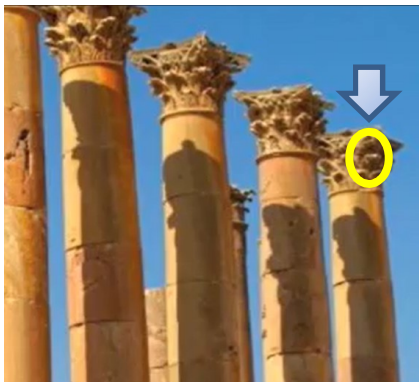
SATANIC ANOINTING OIL (AMPULLA) from AN ANGEL – NOT THE HOLY SPIRIT

An angel descended (fell) ...

NOT the Holy Ghost



Fallen angel wings



Ancient blood ritual sites



Painting of the first King of France, the Catholic King Clovis in 481 AD, receiving miraculous oil from angel represented by a Fleur De Lis. **Every crown with a Fleur-De-Lis signifies divinity and submission to the power of the church of Rome.**



Fleur De Lis

DID YOU KNOW?

It is told that an angel descended from heaven with the Holy Ampulla in the shape of a fleur-de-lis when King Clovis of France was proclaimed. It thus signified the French kings' direct link to God.

Direct link to FALLEN Divinity and satanic power

“THE DEVIL’S FLOWER”

The Fleur D Lys first emerged in Egypt and Bablyonia before developing in France



Egyptian
Fleur D lys



Babylonian Fleur
D lys



Early French Fleur
D lys



The devil’s flower attracts demons (dream catcher) and
a person can get demon possessed with this symbol

SATAN MUST HAVE SYMBOLS TO GET INTO YOUR HOUSE

RCCG GIVES \$2 million TO ILLUMINATI WINNERS CHAPEL



TEN BUILDINGS ALL SIMILAR
Oyedepo \$150 m TOP 10 richest in world

MAN-MADE GOSPEL - MAN OF SIN - Armageddon

Teaching makes
people proud

STOP FOLLOWING
RICH PASTORS !



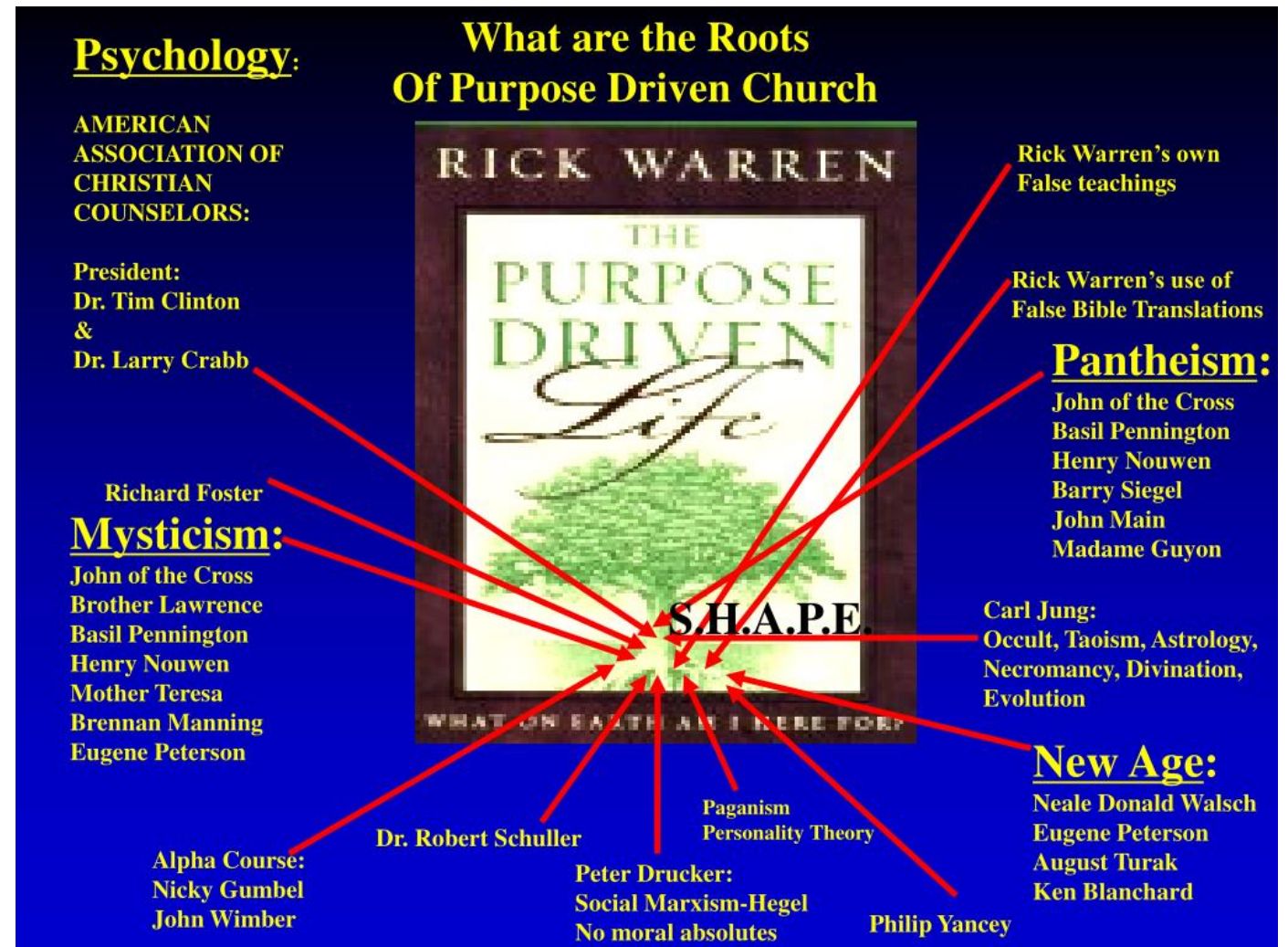
Irrespective of what your current state is, if you belong to God through Jesus Christ, you are a king. You might not feel like it, but the truth is, in the spirit realm you are royalty. You need to be conscious of this great privilege that Christ has bestowed on you and walk in it



Alpha Course



Rick Warren



1980- WAS THE BIRTH OF THE MEGA CHURCHES

Ed Lapiz (1985) – Jesuit UPSIDE DOWN DOVE

Butch Conde (1982)

Bo Sanchez (1980) – CHARISMATIC BECAME Open CATHOLIC – ALL THREE ROSE UP at same time



Ed Lapiz (1985)

DAY BY DAY Christian Ministries (6,000 in Makati)

Comes from the mountains of Makiling (many demon possessions)

No theological background, does not believe in Western Theology

Background is Philippine Arts, Anthropology and Philosophy

Inspired by Rizal's Florante at Laura (revolution against Spain)

"Nationalism is a great form of spirituality."

Invented Contextualized Filipino Theology

Invented Cultural Redemption –

Uses demonic folk dances and other cultural items for worship

Modernizes and Christianizes tribalism or ancestral worship

THIS ACTIVITY IMPARTS DEMONS TO PEOPLE

Most listened to in Philippines, Believes in different bible versions

...we cannot judge other people

...we should enjoy our life to the fullest (Osteen)

Uses Ecclesiastes to support Birthdays which has polluted the minds

Butch Conde (1982) – BREAD OF LIFE 35,000 members

The Catholic School Maryknoll College opened their auditorium for his meetings, He is Christianizing yoga and karate

BELIEF IN EARLY CHURCH FATHERS

Every Nation Victory (1984) + CCF (1984)

The Scriptures were written by Jews (Hebrews). Any non-Jew who writes the Bible is Antichrist.

Anything written after Revelation is Antichrist (even written by a Jew)

The Early Church fathers WERE NOT JEWS, they were antichrists St. Augustine, St. Jerome etc.

These churches put the creeds above the bible in the Statement of Faith

The Apostles' Creed, the Nicene Creed (381), and

the Chalcedonian Creed (451) the fourth of the ecumenical councils

The expression "Apostles' Creed" is first mentioned in a letter from the Synod of Milan

dated AD 390, referring to a belief at the time that each of the Twelve Apostles

contributed an article to the twelve articles of the creed - NONSENSE

These creeds were all written by Early Church fathers after the Revelation

Cursed when placed at the same level as Scripture, as the Apostle's creed does. Rev 22:18

They are ECUMENICAL (ANTICHRIST) CREEDS

Any church who uses them is part of the Ecumenical Antichrist movement



English



Search



[About the WCC](#)

[Member churches](#)

[News](#)

[Events](#)

[What we do](#)

[Get involved](#)

[Resources](#)

[Contact & Press](#)

[Blog](#)

[Assembly](#)

Member churches

The WCC is a fellowship of 352 member churches who together represent more than half a billion Christians around the world.



National Council of Churches in the Philippines

Using CRISIS TO SUSTAIN ECUMENISM

Confusing Church with Social (Government) Issues

DOCTRINE OF ANAWIM

Anawim – “Poor In Spirit”
Or “Faithful Remnant” of the Hebrews
Mary is the first “Perfect” Anawim

Anawim Misyon sa mga Mahihirap 2018

The significant of this ecumenical group is the participation of the bishops, pastors and lay leaders of the Philippine Council of Evangelical Churches (PCEC)

To “evoke various pastoral tools for reflection and planning for action”

Others include PIMAHT and PEPP

